

About this kit 50999:

This battery connector has been improved and now features a visible fuse for trouble-shooting, and a new internal design for a longer life. Carefully follow these instructions to remove and replace the battery connector from your ride-on. For models including: 50506 and 50506A.

This kit contains:

- 1 blue connector with wires

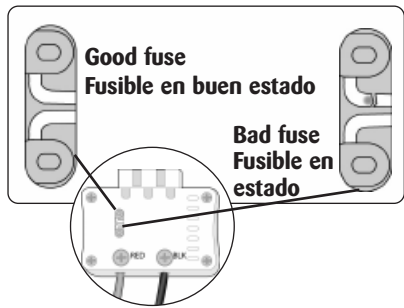
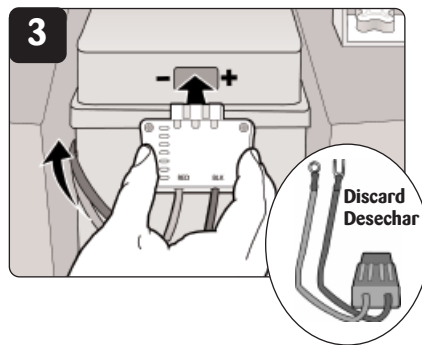
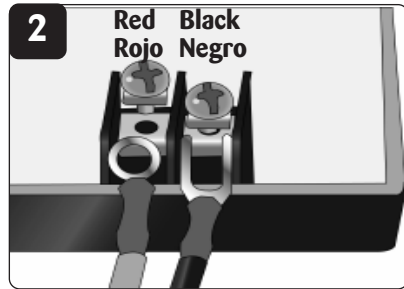
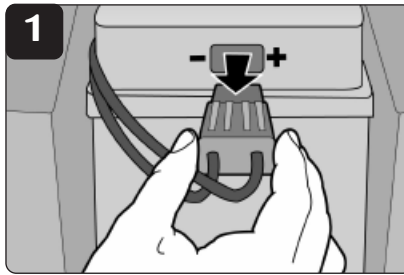
Tools needed:

- Phillips head screwdriver

Fire Engine Procedure

1 Disconnect battery connector.

Open battery compartment cover (see your User Guide for details), and disconnect the original black battery connector from the 12volt battery (Figure 1).



⚠ WARNING

• ALWAYS DISCONNECT THE BATTERY CONNECTOR FROM BATTERY BEFORE BEGINNING ANY PROCEDURE.

2 Connect the new blue battery connector to the circuit board.

Locate and unscrew the two screws on the circuit board, **being certain to note location of red and black**. Remove old wires from board and discard wires and original black connector. Place the red and black wires of the new blue battery connector under screws and secure screws tightly (Figure 2).

3 Connect your new blue battery connector.

Plug the new blue battery connector into the battery (Figure 3). Close and secure battery compartment.

End of "Fire Engine Procedure."

Troubleshooting Tip: If you suspect that your vehicle has blown its fuse, look through the fuse window. If the fuse is blackened or broken, the fuse has blown. The fuse is not replaceable. Call Consumer Relations for further assistance at 1 (800) 544-1108.

About this kit 50999:

This battery connector has been improved and now features a visible fuse for trouble-shooting, and a new internal design for a longer life. Carefully follow these instructions to remove and replace the battery connector from your ride-on. For models including: 50506 and 50506A.

This kit contains:

- 1 blue connector with wires

Tools needed:

- Phillips head screwdriver

Fire Engine Procedure

1 Disconnect battery connector.

Open battery compartment cover (see your User Guide for details), and disconnect the original black battery connector from the 12volt battery (Figure 1).

⚠ ADVERTENCIA

• SIEMPRE DESCONECTE EL CONECTOR DE LA BATERIA ANTES DE REALIZAR CUALQUIER PROCEDIMIENTO.

2 Connect the new blue battery connector to the circuit board.

Locate and unscrew the two screws on the circuit board, **being certain to note location of red and black**. Remove old wires from board and discard wires and original black connector. Place the red and black wires of the new blue battery connector under screws and secure screws tightly (Figure 2).

3 Connect your new blue battery connector.

Plug the new blue battery connector into the battery (Figure 3). Close and secure battery compartment.

End of "Fire Engine Procedure."

Troubleshooting Tip: If you suspect that your vehicle has blown its fuse, look through the fuse window. If the fuse is blackened or broken, the fuse has blown. The fuse is not replaceable. Call Consumer Relations for further assistance at 1 (800) 544-1108.

About this kit 50998:

This battery connector has been improved and now features a visible fuse for trouble-shooting, and a new internal design for a longer life. Carefully follow these instructions to remove and replace the battery connector from your ride-on. For models including: 50503, 50503A, 50504, 50504A, 50505, 50505A, 50521, 50521A, and 50527. **NOTE:** If you have a Fire Engine, DO NOT FOLLOW THIS PROCEDURE.

This kit contains:

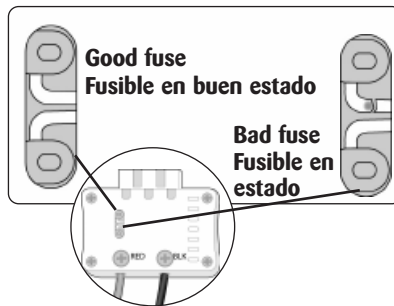
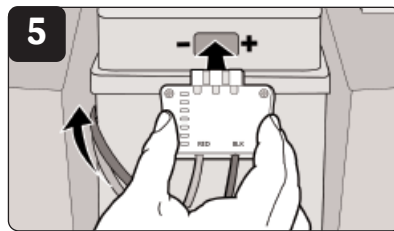
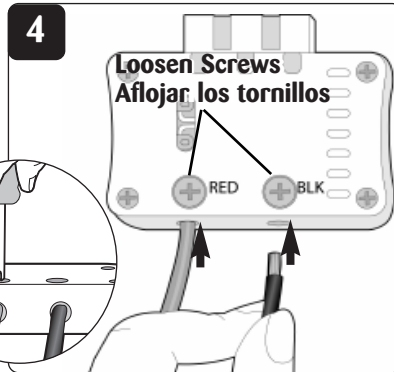
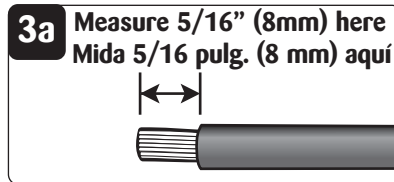
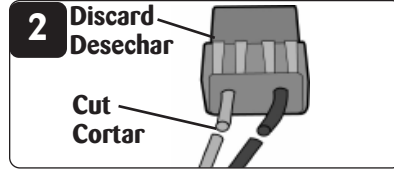
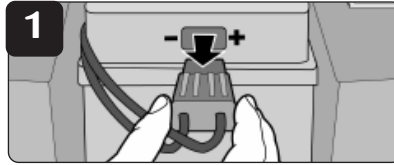
- 1 blue connector with wires
- Wire strippers

Tools needed:

- Phillips head screwdriver
- Wire snips

1 Disconnect battery connector.

Open battery compartment cover (see your User Guide for details), and disconnect the original black battery connector from the 12volt battery (Figure 1).



⚠ WARNING

• ALWAYS DISCONNECT THE BATTERY CONNECTOR FROM BATTERY BEFORE BEGINNING ANY PROCEDURE.

2 Cut red and black wires. Using wire snips, cut the red and black wires nearest the original black battery connector (Figure 2). Discard original black battery connector.

3 Strip wires. Strip 5/16" (8 mm) of plastic insulation off the ends of the wires that you cut in step 2 (Figure 3). Hold the wire up to the strip diagram in Figure 3a to check to be sure the bare ends measure 5/16" (8 mm).

4 Secure wires in new blue connector. Locate the letters "RED" and "BLK" (black) on the new blue battery connector and be **certain** to place the correct color wire in the corresponding hole. Insert the bare ends of wires into the holes completely; no bare wire should be outside of the new blue battery connector. Secure the Phillips head screw tightly over the bare wires (Figure 4). Attach Caution label to blue battery connector wires.

5 Connect your new blue battery connector. Plug the new blue battery connector into the battery (Figure 5). Close and secure battery compartment. End of procedure.

Troubleshooting Tip: If you suspect that your vehicle has blown its fuse, look through the fuse window. If the fuse is blackened or broken, the fuse has blown. The fuse is not replaceable. Call Consumer Relations for further assistance at 1 (800) 544-1108.

About this kit 50998:

This battery connector has been improved and now features a visible fuse for trouble-shooting, and a new internal design for a longer life. Carefully follow these instructions to remove and replace the battery connector from your ride-on. For models including: 50503, 50503A, 50504, 50504A, 50505, 50505A, 50521, 50521A, and 50527. **NOTE:** If you have a Fire Engine, DO NOT FOLLOW THIS PROCEDURE.

This kit contains:

- 1 blue connector with wires
- Wire strippers

Tools needed:

- Phillips head screwdriver
- Wire snips

1 Disconnect battery connector.

Open battery compartment cover (see your User Guide for details), and disconnect the original black battery connector from the 12volt battery (Figure 1).

⚠ ADVERTENCIA

• SIEMPRE DESCONECTE EL CONECTOR DE LA BATERIA ANTES DE REALIZAR CUALQUIER PROCEDIMIENTO.

2 Cut red and black wires. Using wire snips, cut the red and black wires nearest the original black battery connector (Figure 2). Discard original black battery connector.

3 Strip wires. Strip 5/16" (8 mm) of plastic insulation off the ends of the wires that you cut in step 2 (Figure 3). Hold the wire up to the strip diagram in Figure 3a to check to be sure the bare ends measure 5/16" (8 mm).

4 Secure wires in new blue connector. Locate the letters "RED" and "BLK" (black) on the new blue battery connector and be **certain** to place the correct color wire in the corresponding hole. Insert the bare ends of wires into the holes completely; no bare wire should be outside of the new blue battery connector. Secure the Phillips head screw tightly over the bare wires (Figure 4). Attach Caution label to blue battery connector wires.

5 Connect your new blue battery connector. Plug the new blue battery connector into the battery (Figure 5). Close and secure battery compartment. End of procedure.

Troubleshooting Tip: If you suspect that your vehicle has blown its fuse, look through the fuse window. If the fuse is blackened or broken, the fuse has blown. The fuse is not replaceable. Call Consumer Relations for further assistance at 1 (800) 544-1108.